

Precast Concrete Domestic & Industrial



ATHBOY **SMALL LOADS**
LANDSCAPING & BUILDING SOLUTIONS

CONTACT:

Paddy

☎ 087 608 3211

Gabriel

☎ 086 374 0487

Lentils

Pre-stressed steel runs the length of all lintels

Customisable lengths up to 12 ft / 3.66 m

Dimensions:

- 4 x 3 inches / 100 x 70 mm
- 6 x 3 inches / 152 x 70 mm
- 6 x 4 inches / 152 x 100 mm
- 9 x 3 inches / 229 x 70 mm



Kerbing

Comes in 3 ft / 914 mm lengths

Dimensions:

- 6 x 2 inches / 152 x 50 mm
- 6 x 4 inches / 152 x 100mm
- 7 x 4 inches / 178 x 100 mm
- 10 x 5 inches / 254 x 127 mm



Window Cills

Customisable lengths up to 12 ft / 3660 mm

Dimensions:

- 10 x 2 inches / 254 x 50 mm
- 10 x 4 inches / 254 x 100 mm
- 18 x 2 inches / 457 x 50 mm
- 18 x 4 inches / 457 x 100 mm



Septic Tanks

Tank: Weight: 3725kg

Dimensions: 2900 x 1600 x 1980mm (L x W x H)

Total width incl. lifting ears is 1750mm.

Volume: 5.7m³ (Total)

Lid: (includes manhole)

Dimensions: 2900 x 1600 x 100mm (L x W x H). 825kg

Manhole Cover:

Dimensions: 765 x 335 x 50mm (L x W x H). 30kg

Riser:

Dimensions: 900 x 800 x 640mm (L x W)



Chimney Caps

Come in the following sizes:

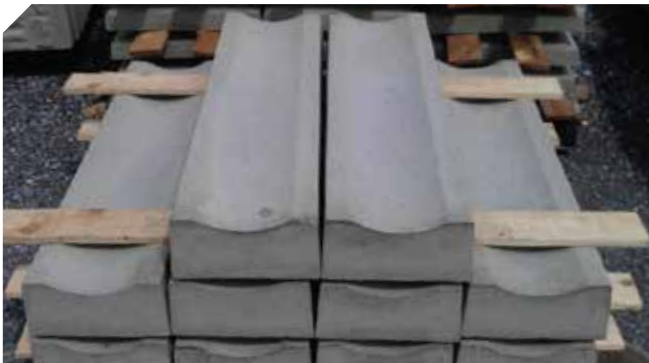
- 28 x 28 inches / 700 x 700 mm
- 42 x 28 / 1066 x 700 mm
- 50 x 28 / 1270 x 700 mm



Drainage Channels

Come in the following sizes:

- 3 ft / 914 mm long
- 8 inch / 200 mm wide
- 5 inch / 127 mm thick



Flue Gatherer

Standard size



Wall Caps

Standard Saddleback wall caps come in lengths of 3 ft / 914 mm

And widths of:

- 7 inch / 178 mm
- 9 inch / 229 mm
- 12 inch / 305 mm
- 15 inch / 381 mm



Bullnose wall caps come in lengths of 3 ft / 914 mm

And widths of:

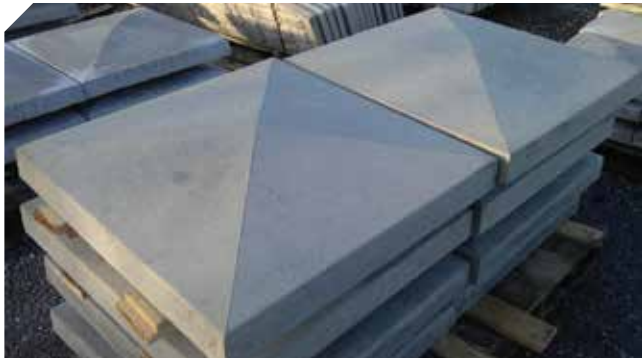
- 8 inch / 203 mm
- 10 inch / 254 mm
- 13 inch / 330 mm



Pier Caps

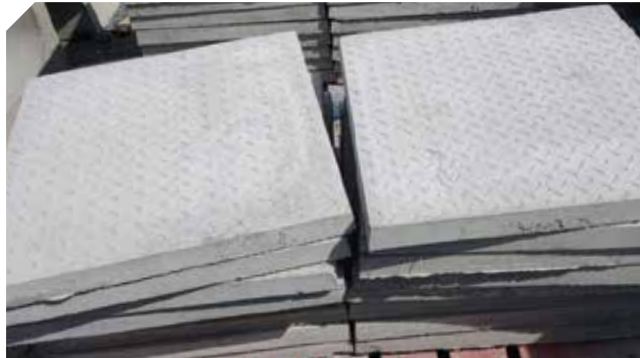
Standard saddleback pier caps come in the following sizes:

- 16 inch / 406 mm
- 18 inch / 457 mm
- 22 inch / 559 mm
- 28 inch / 711 mm



Flat Pier Caps come in the following sizes:

- 16 inch / 406 mm
- 18 inch / 457 mm
- 22 inch / 559 mm
- 28 inch / 711 mm



Bullnose pier caps come in the following sizes:

- 22 inch / 559 mm
- 28 inch / 711 mm



Georgian Pier caps come in the following sizes:

- 22 inch / 559 mm
- 28 inch / 711 mm



Patio Slabs



Palling Post Fencing



Post and Panel Fencing

Generally, two posts are used when doing a corner piece as pictured below.

- 5" / 1270 mm thick
- 5' 6" / 1676 mm high
- 6' 6" / 2000 mm high



Rock Face and Plain Wall Panels

- Each Panel is 12 inches / 300 mm high and 50mm thick
- Rock Face Panels are 183 mm long.
- Plain Panels are 1800 mm long.
- Wall panels easily slot into our H-Posts for a seamless finish.



Top Panels

We have three types of top panels which adorn our rock face panels.

- Rounded top
- Spiked top
- Balustrade top

Plain Panel

H Post

Wall Panels slide perfectly into our tongue and groove joint H-Posts.

Posts are 5" / 127mm thick

- 6 ft / 1830 mm
- 7 ft / 2130 mm
- 8 ft / 2440 mm
- 9 ft / 2740 mm
- 10 ft / 3040 mm
- 12 ft / 3650 mm



ATHBOY **SMALL
LOADS**

LANDSCAPING & BUILDING SOLUTIONS

CONTACT:

Paddy

↪ **087 608 3211**

Gabriel

↪ **086 374 0487**